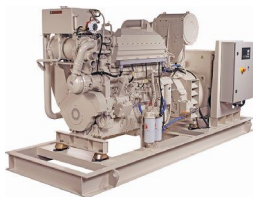


K19-CP

C POWER

MARINE GENSET



GENERAL SPECIFICATIONS

Engine Model	KTA19-D(M1)
Alternator	STAMFORD HCM534E

PRIME POWER RATINGS

kWe	kVa	Hz	Voltage	FUEL CONSUMPTION		EMISSIONS		
				Rated L/hr (Gal/hr)	ISO Avg L/hr (Gal/hr)	IMO	EPA	EU
KC- and HX-cooled ratings								
335	419	50	380	91.1 (24.1)	47.1 (12.4)	2	—	—
			400					
			415					
			440					
380	475	50	380	102.6 (27.1)	52.5 (13.9)	2	—	—
			400					
390	488	50	415	102.6 (27.1)	52.5 (13.9)	2	—	—
			440					
			416					
400	500	60	440	106.4 (28.1)	58.8 (15.5)	2	—	—
			460					
			480					
			416					
450	563	60	416	120.8 (31.9)	64.7 (17.1)	2	—	—
460	575	60	440	120.8 (31.9)	64.7 (17.1)	2	—	—
			460					
			480					

Ratings below 130 kW are not subject to IMO emission regulations.

For more information on average fuel consumption and emissions, refer to the Reference Materials section.

PRODUCT DIMENSIONS

		KC AND HX CONFIGURATIONS	
Length	mm (in)	3500	(137)
Width	mm (in)	1540	(60)
Height	mm (in)	2100	(62)
Weight	kg (lb)	4100	(9039)

Dimensions may vary based on selected engine configuration.