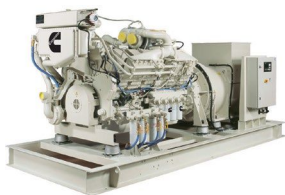


# K38-CP

## C POWER

## MARINE GENSET



### GENERAL SPECIFICATIONS

Engine Model	KTA38-D(M1)
Alternator	STAMFORD PM734B

### PRIME POWER RATINGS

kWe	kVa	Hz	Voltage	FUEL CONSUMPTION		EMISSIONS		
				Rated L/hr (Gal/hr)	ISO Avg L/hr (Gal/hr)	IMO	EPA	EU
<b>KC- and HX-cooled ratings</b>								
764	955	50	380	206.0 (54.4)	107.5 (28.4)	2	—	—
804	1005	50	400	206.0 (54.4)	113.3 (29.9)	2	—	—
832	1040	50	415	206.0 (54.4)	117.1 (30.9)	2	—	—
845	1056	50	440	206.0 (54.4)	118.4 (31.3)	2	—	—
888	1110	60	416	226.7 (59.9)	129.7 (34.3)	2	—	—
920	1150	60	440	226.7 (59.9)	134.8 (35.6)	2	—	—
			460					
			480					

Ratings below 130 kW are not subject to IMO emission regulations.

For more information on average fuel consumption and emissions, refer to the Reference Materials section.

### PRODUCT DIMENSIONS

KC AND HX CONFIGURATIONS			
Length	mm (in)	4500	(177)
Width	mm (in)	1900	(74)
Height	mm (in)	2100	(82)
Weight	kg (lb)	8200	(18078)

Dimensions may vary based on selected engine configuration.