

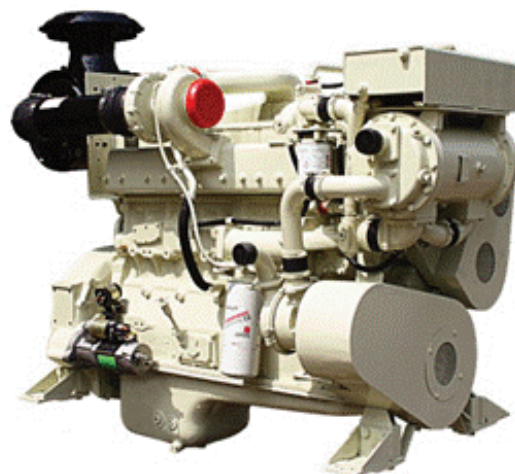


# N855 CCEC

## Marine Propulsion and Auxiliary Engines for Commercial Applications

### General Specifications

<b>Configuration</b>	In-line, 6-cylinder, 4-stroke diesel
<b>Aspiration</b>	Turbocharged (NT855) or Turbocharged / Aftercooled (NTA855)
<b>Displacement</b>	14 L (855 in <sup>3</sup> )
<b>Bore &amp; Stroke</b>	140 X 152 mm (5.5 X 6.0 in)
<b>Rotation</b>	Counterclockwise facing flywheel
<b>Fuel System</b>	Pressure Time (PT)



### Product Dimensions and Weight

<b>Overall Length</b>	mm (in)	1975	(77.8)
<b>Length of Block</b>	mm (in)	1137	(44.76)
<b>Overall Width</b>	mm (in)	934	(36.8)
<b>Overall Height</b>	mm (in)	1598	(62.9)
<b>Weight</b>	kg (lb)	1430	(3150.0)

Dimensions and weight may vary based on selected engine configuration.

### Power Ratings

Engine Model	Output Power			Engine Speed RPM	Rating Definition	Fuel Consumption		Emissions			
	kW	MHP	BHP			Rated Speed L/hr (gal/hr)	ISO* L/hr (gal/hr)	IMO	EPA	EU	RCD
<b>Variable Speed</b>											
NT855-M	179	243	240	1800	Continuous	46.4 (12.3)	32.8 (8.7)	1	-	-	-
NT855-M	201	274	270	1800	Continuous	51.1 (13.5)	35.1 (9.3)	1	-	-	-
NTA855-M	224	304	300	1800	Continuous	56.0 (14.8)	39.0 (10.3)	1	-	-	-
NTA855-M	261	355	350	1800	Continuous	66.2 (17.5)	46.6 (12.3)	1	-	-	-
NTA855-M	298	406	400	1800	Continuous	74.6 (19.7)	52.0 (13.7)	1	-	-	-
NTA855-M	336	456	450	1800	Continuous	83.6 (22.1)	N/A	1	-	-	-
N855-M	261	355	350	1800	Continuous	68.9 (18.2)	47.7 (12.6)	2	-	-	-
N855-M	298	406	400	1800	Continuous	77.3 (20.4)	53.1 (14.0)	2	-	-	-
N855-M	298	406	400	2100	Heavy Duty	84.0 (22.2)	57.5 (15.2)	2	-	-	-
<b>Fixed Speed</b>											
NTA855-DM	240	325	321	1500 (50 Hz)	Prime	60.2 (15.91)	30.2 (8.0)	1	-	-	-
N855-DM	240	325	321	1500 (50 Hz)	Prime	60.2 (15.91)	33.1 (8.7)	2	-	-	-
NTA855-DM	284	385	380	1500 (50 Hz)	Prime	70.0 (18.50)	N/A	1	-	-	-
N855-DM	284	385	380	1500 (50 Hz)	Prime	70.1 (18.51)	35.2 (9.3)	2	-	-	-
NTA855-DM	287	390	385	1800 (60 Hz)	Prime	70.0 (18.50)	35.2 (9.3)	1	-	-	-
N855-DM	287	390	385	1800 (60 Hz)	Prime	73.3 (19.36)	39.6 (10.5)	2	-	-	-
NTA855-DM	313	426	420	1800 (60 Hz)	Prime	78.0 (20.60)	39.3 (10.4)	1	-	-	-
N855-DM	313	426	420	1800 (60 Hz)	Prime	78.5 (20.75)	42.4 (11.2)	2	-	-	-
N855-DM	317	431	425	1500 (50 Hz)	Prime	76.8 (20.28)	39.5 (10.4)	2	-	-	-

\* Average fuel consumption based on ISO 8178 E3 Standard Test Cycle (variable speed models) and ISO 8178 D2 Standard Test Cycle (fixed speed models)

# N855 CCEC

## Marine Propulsion and Auxiliary Engines for Commercial Applications

### Features and Benefits

**Engine Design** – Rugged engine block designed for continuous duty operation and long life. Metric O-ring seals and edge molded gaskets eliminate fluid leaks. Full power take-off available from front of crankshaft. Aluminum single-piece piston design with hardened liners and nitride coated rings for exceptional durability

**Fuel System** – Dependable Cummins PT fuel system optimizes combustion for enhanced fuel economy as well as reduced emissions and minimal smoke. Premium fuel injectors utilize ceramic components for increased durability

**Cooling System** – Engine mounted plate-type heat exchanger system available. Spin-on Cummins water treatment filters for protection against cooling system corrosion

**Exhaust System** – Water cooled exhaust manifold reduces emissions and cools engine surface temperatures

**Air System** – Cummins turbocharger optimized for marine applications. Water pump for efficient operation and optimized performance

**Lubrication System** – Fleetguard spin-on oil filters provides extended service intervals and reduce maintenance. Standard capacity (34.0 L [9.0 gal]) or large capacity (37.0 L [9.7 gal]) oil pan available allows for longer oil change intervals. Prelub system protects engine from damage due to dry starts

**Electronics** – 24v, 100 amp alternator with isolated ground components

**Certifications** – Complies with IMO emissions regulations, certified by China Classification Society (CCS)



Cummins Inc.  
4500 Leeds Avenue – Suite 301  
Charleston, SC 29405-8539  
U.S.A.

Phone: 1-800-CUMMINS™ (1-800-286-6467)  
Internet: [marine.cummins.com](http://marine.cummins.com)

[Twitter.com/CumminsEngines](https://twitter.com/CumminsEngines)  
[YouTube.com/CumminsEngines](https://www.youtube.com/CumminsEngines)

Bulletin 5410574 Printed in U.S.A. Rev. 2/17  
©2017 Cummins Inc.